



Orbit

self managing public toilet series

more than just a convenience



the Orbit series are available in single, twin and triple formats

Orbit

The atmosphere of any town or city can be determined by the style of its buildings and the provision of facilities. The Exeloo Orbit public toilet series combines the highest level of public amenity with a distinctive design style created to enhance most streetscape locations. The high quality brushed stainless steel finish of the exterior and roof ensure the units have an attractive architectural appearance in addition to the flexibility and resilience provided.

The Orbit range is available in single, twin and triple formats with all providing outstanding durability and easy clean environments that meet compliance code requirements. The units are easily installed, fully relocatable, contain no timber in the construction and are manufactured in our purpose built factory.

The design of the Orbit series allows integration with the latest technologies that can improve water and power efficiency reducing their carbon footprint. Options include rainwater harvesting, black water onsite treatment and recycling, water efficient toilet pans and flushing systems. Extensive use of stainless steel in most accessories and components also ensures any future needs for recycling are catered for.

The latest technological advances at Exeloo provide the capability for a web based remote monitoring system to be integrated into the automated versions that will enable instant access to extensive data including number of occupations, water usage, power consumption, programmable time settings and provide solutions to troubleshooting.

The Exeloo vision is to manufacture public toilet facilities that provide the highest standard of hygiene and safety for users, meet the needs of the disabled and discourage loitering and vandalism.



top: Orbit single bottom: surface mounted graphics



porcelain on steel interior with recessed accessories

Orbit Structure

Floor A precast reinforced concrete floor that falls to a built in floor drain allows easy installation on simple foundation pads.

Wall and roof frame Exterior wall and roof frames are made of duragal steel to ensure strength when the unit is transported and ensure a long service life.

Cladding The duragal steel frame allows the exterior to be clad with a variety of materials. Attractive brushed stainless steel panels are the standard finish with alternative options including decorative stainless steel or colour coated enamel panels.

Roof Stainless steel roofing, fascia and soffits.

Doors The stainless steel cavity sliding doors with a rigid aluminium frame are a main feature and benefit. The concealed magnetic locking system provides the ability to programme the unit to lock and unlock at preset times (where power is available). They are also extremely resilient and enhance the aesthetic appearance of the unit.

Interior wall linings All interior walls are lined with large durable ceramic tiles providing a resilient, long lasting surface resistant to most forms of vandalism and graffiti. Porcelain on steel panels are available as an alternative option.

Floor surfacing The floor is surfaced with non-slip ceramic tiles and moisture resistant grout.

Ceiling A high density composite ceiling provides a smooth stylish appearance.

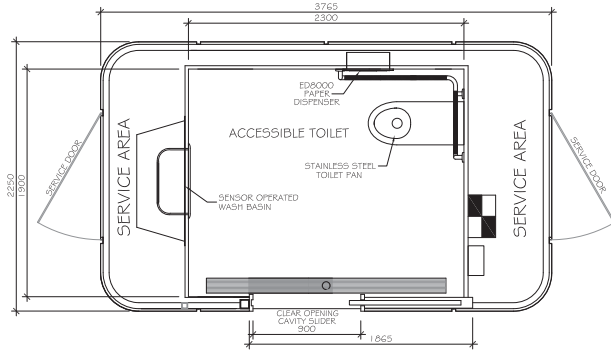
Signage Vandal resistant Braille signs and indicator lights show the status of the unit and provide operating instructions.

Lighting A large, vandal resistant stainless steel framed light box is recessed into the ceiling, providing a very high level of lighting to ensure user safety.

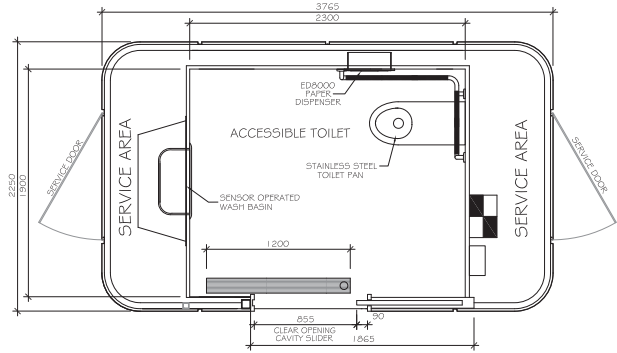
Concealed operating components All control devices, wiring and plumbing services are concealed in the service area of the unit reducing clutter and ensuring they cannot be tampered with or damaged.

Accessories An extensive range of accessories are available including a recessed stainless steel sensor operated basin, electronic jumbo roll paper dispenser, electronic door operation, toilet seat wash system, touch free sensor switches and wash down system. These are available as an option depending on the model and specification chosen.

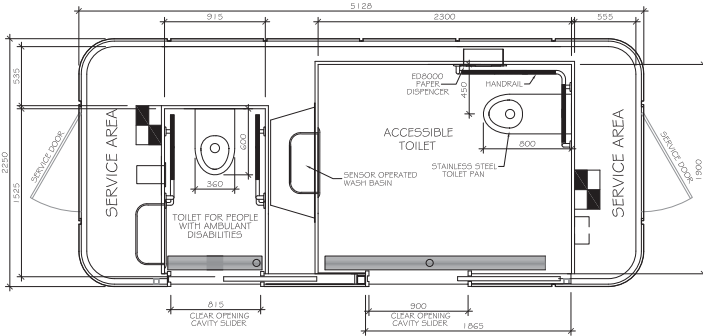
Contact us to discuss your design requirements



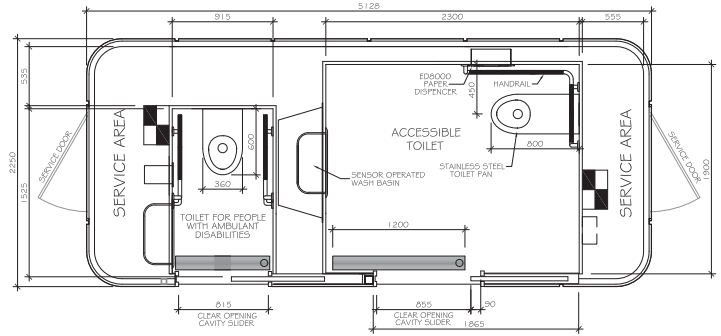
Model 21 - Orbit Single Auto



Model 31 - Orbit Single Manual



Model 22 - Orbit Twin Auto



Model 32 - Orbit Twin Manual

Features Summary

- A safe, hygienic and welcoming environment for users
- Multiple safety systems
- Vandal resistant fixtures and surfaces
- Access and facilities for people with disabilities
- Automatic daily locking and unlocking
- Simple installation and relocation if required
- Statistics on usage provided through touch screen display
- Internal and external cladding options
- Sustainable design
- Fixed occupation time
- Music and voice messages
- Stainless steel accessories
- Cavity sliding door operation
- Status indicator light panel

Optional Features

- Web based remote monitoring
- Automatic doors
- Manually operated doors with magnetic locks
- Manually operated doors with mechanical locks
- Wash down cycle
- Touch free sensor switches
- Recessed electronic sensor operated basin unit
- Recessed electronic jumbo paper dispenser
- Recessed sanitary disposal
- No touch toilet flushing
- Toilet seat wash system
- Variable settings
- Sharps disposal
- Hearing impaired indicator
- Baby change table
- Coin or card operation
- Emergency lighting
- Movement sensor

New Zealand

Exeloo Ltd
tel: 0800 EXELOO (0800 393 566)
tel: 64 9 838 8912
email: info@exeloo.com
web: www.exeloo.com

Australia - VIC, ACT, SA, TAS, WA

WC Innovations
tel: 1300exeloo (1300 393 566)
email: sales@wcinnovations.com.au
web: www.wcinnovations.com.au

Australia - NSW, NT, QLD

Exeloo Pty Ltd
tel: 1800 501 069
email: sales@exeloo.com.au
web: www.exeloo.com.au

USA

Public Facilities & Services Inc
tel: 1 800 303 3506
email: contact@exeloo.com
web: www.exeloo.com

exeloo®

www.exeloo.com