



more than just a convenience



the Eurokit series are available in single accessible and ambulant formats

Eurokit

There are many sites where a high quality public toilet unit is required inside a brand new or existing building structure. Examples of these include: historic buildings that need to be preserved but upgraded, individual building designs with integrated toilets, supermarkets and retail premises, public buildings and offices, car parks, fast food premises and other restricted locations.

A sustainable and flexible design was required to provide a solution and meet this demand, so at Exeloo we have developed a panellised public toilet series that has all electrical and plumbing equipment fitted and ready for use. The whole facility arrives in a container, is wheeled into the premises on trolleys and assembled in a day. Once the service connections are made and the floor has been sealed and tiled, the unit is ready for use.

While maintaining a very high quality of finish, the Eurokit series provides a wide range of facilities in fully accessible and ambulant versions from lower cost standard units through to the higher specification automated units. The design provides excellent flexibility for integration into buildings and the facade can be easily adapted to enhance the existing or new surroundings.

The latest technological advances at Exeloo provide the capability for a web based remote monitoring system to be integrated into the automated versions. This will enable instant access to extensive data including number of occupations, water usage, power consumption, programmable time settings and provide solutions to troubleshooting.

The Exeloo vision is to manufacture public toilet facilities that provide the highest standard of hygiene and safety for users, meet the needs of the disabled and discourage loitering and vandalism.



examples of Eurokit installations



porcelain on steel interior with recessed accessories

Eurokit Structure

Floor The unit is designed for installation onto an existing or new concrete floor. After the interior base frame is sealed and fixed to the concrete floor, the interior area is screeded to the floor drains and tiled with slip resistant floor tiles.

Exterior Wall The Eurokit is designed to be installed inside another structure so it does not include any external wall or roof structure. When designing the installations of a Eurokit, provision must be made for a separate exterior shell that provides a service area and has all services provided in this service location. Floor drains also need to be pre-fitted to the new/existing floor.

Base frame This is fabricated in a stainless steel box frame that effectively forms a dam around the cubicle preventing any wash water going outside the cubicle.

Wall frame A structural aluminium panel provides the structural support for each wall panel that is placed on the base frame.

Doors The stainless steel sliding cavity doors with a rigid aluminium frame are a main feature and benefit. The concealed magnetic locking system provides the ability to programme the unit to lock and unlock at preset times (where power is available). They are also extremely resilient and enhance the aesthetic appearance of the toilet unit.

Interior Walls These are lined with baked porcelain on steel

panels (available in different colours) providing a resilient, long lasting surface resistant to most forms of vandalism.

Ceilings A fibreglass ceiling provides a smooth stylish appearance. This is laminated onto a solid panel that includes a structure to span between the walls.

Signage Vandal resistant Braille signs and indicator lights show the status of the unit and provide operating instructions.

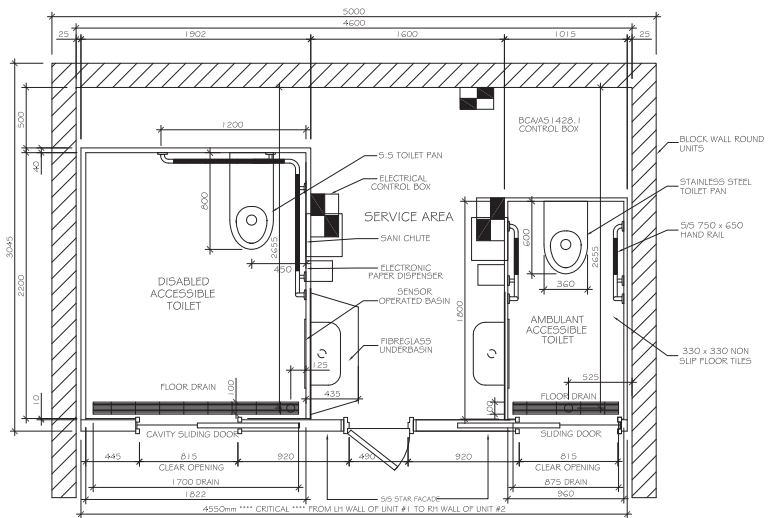
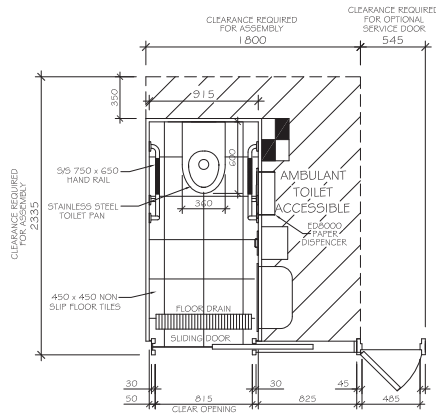
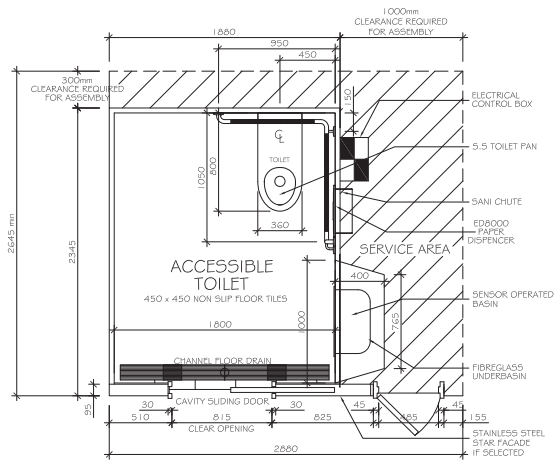
Lighting A large vandal resistant light box is recessed into the ceiling providing a very high level of lighting to enhance user safety.

Concealed Operating Components All control devices, wiring and plumbing services are pre-fitted to the exterior of the panels in the factory, so they will be located in the service area of the unit once assembled on site, reducing clutter and ensuring they cannot be tampered with or damaged.

Note: Once assembled on site, some power and water connections need to be plugged together between the panels.

Accessories An extensive range of accessories are available including a recessed stainless steel sensor operated basin and jumbo roll electronic paper dispenser, electronic door operation, touch free sensor switches and wash down system. These are available depending on the model and specification chosen.

Contact us to discuss your design requirements



Features Summary

- A full toilet facility in an easily installed panel form
- Quick Installation
- A safe, hygienic and welcoming environment for users
- Multiple safety systems
- Vandal resistant fixtures and surfaces
- Access and facilities for people with disabilities
- Automatic daily locking and unlocking
- Statistics on usage provided through touch screen display
- Sustainable design
- Fixed occupation time
- Music and voice messages
- Stainless steel accessories
- Cavity sliding door operation
- Status indicator light panel

Optional Features

- Web based remote monitoring
- Automatic doors
- Manually operated doors with mechanical locks
- Manually operated doors with magnetic locks
- Wash down cycle
- Touch free sensor switches
- Recessed electronic sensor operated basin unit
- Recessed electronic jumbo paper dispenser
- Recessed sanitary disposal
- No touch toilet flushing
- Toilet seat wash system
- Variable settings
- Sharps disposal
- Hearing impaired indicator
- Baby change table
- Coin or card operation
- Emergency lighting
- Movement sensor

New Zealand

Exeloo Ltd
tel: 64 9 838 8912
email: info@exeloo.com
web: www.exeloo.com

Australia - VIC, ACT, SA, TAS, WA

WC Innovations
tel: 1300exeloo (1300 393 566)
email: sales@wcinnovations.com.au
web: www.wcinnovations.com.au

Australia - NSW, NT, QLD

Exeloo RBA Pty Ltd
tel: 1300 788 778
email: info@exeloo.com.au
web: www.exeloo.com.au

USA

Public Facilities & Services Inc
tel: 1 770 992 0038
cel: 1 404 229 7505
email: louis@publicfcs.com
web: www.publicfcs.com

exeloo®

www.exeloo.com